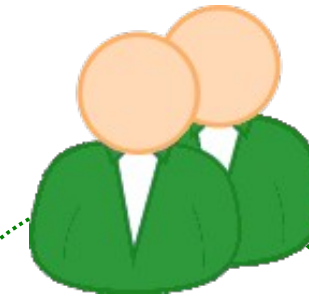
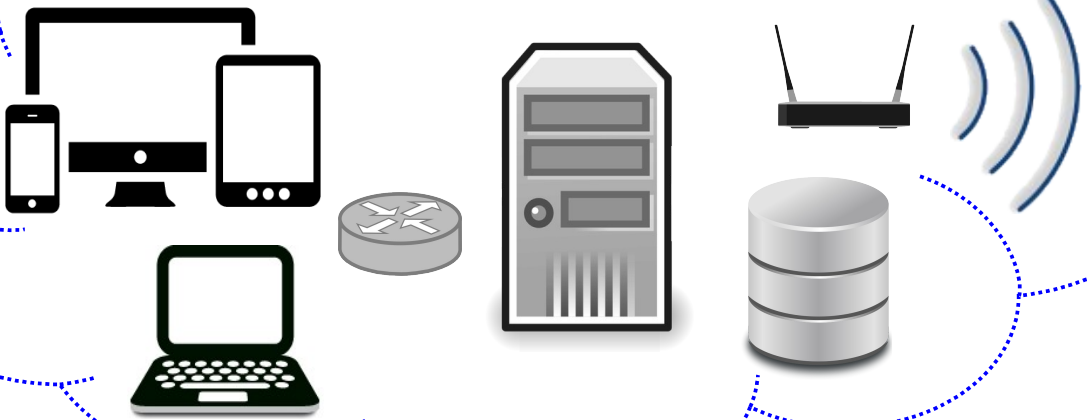


# BTS

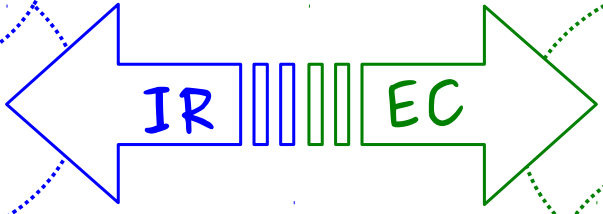
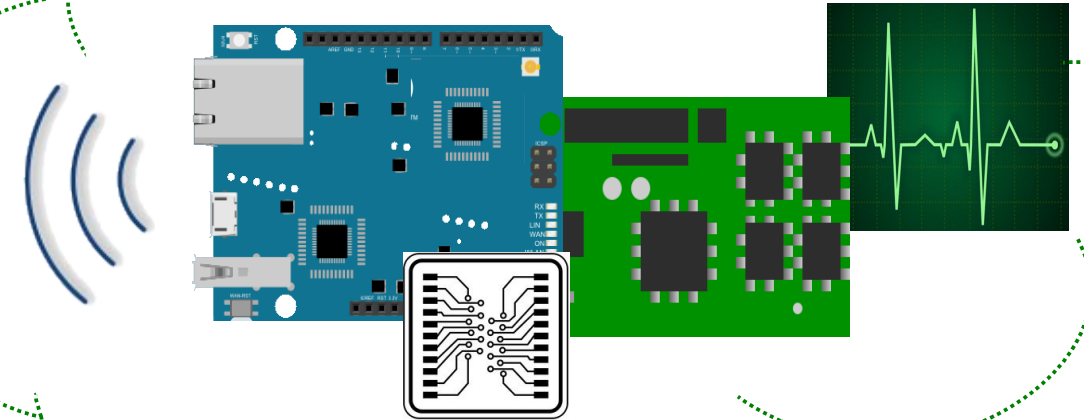
## Systemes Numériques



### Informatique & Réseau

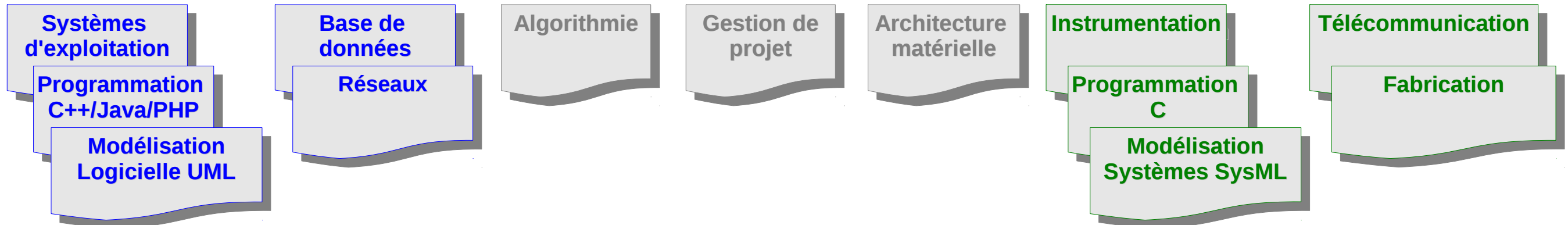


### Électronique & Communication



*Systeme informatique à base de micro-  
processeur (PC, Raspberry Pi, ...)*

*Systeme embarqué électronique à base de  
micro-contrôleur (Arduino, Atmel, ...)*



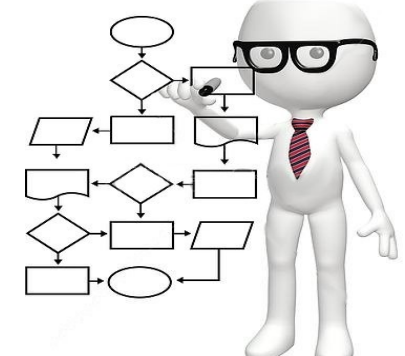
Installer un système



Dépanner une installation



Stage en entreprise



Concevoir un système